



The Fields

AT THREE PILLARS

Since 1905, Three Pillars Senior Living Communities has served thousands upon thousands of families and residents.

Our dedication to a storied history of mission-based services exists as strongly today as it did back then. For us, it's always mission first — we measure our success by the satisfaction of our residents, not the size of our bottom line. Three Pillars' proceeds are reinvested into the organization — not distributed to shareholders.

We value our team members as individuals — recognizing the integral role they play in providing residents with a lifestyle they deserve, at an exceptional value, from people they can trust.

As we look to the future, we consistently seek ways to provide our current and future residents with industry-leading, high-quality care, programming, and accommodations.

OUR MISSION

Three Pillars Senior Living Communities, sponsored by the Masonic Fraternity, takes pride in meeting the social, physical, and spiritual needs of older adults through high-quality housing and services.

OUR VISION

We will be the senior living community of choice in Wisconsin, grounded in Masonic principles in all we do, for residents and other customers who will live lives of fully achieved personal satisfaction, and whose support is uniquely crafted to maintain the highest level of vibrant health and independence.

OUR VALUES

We're proud of our culture. It's driven by our values and modeled by our staff.

The respect and commitment we demonstrate to our residents, and each other, leads to a fulfilled life with a mindset of fun as a habit, and empathy as a decision.

Our five organizational values are:

- **Respect**
- **Commitment**
- **Fulfillment**
- **Empathy**
- **Fun**



LIFE'S JUST GETTING STARTED

AT THREE PILLARS

What the next generation demands from retirement living and services is different. The overall experiences and expectations are distinct. We know this and we celebrate it!

What won't change is a demand for high-quality services, delivered by trusted, compassionate staff and volunteers. This is why we invested over \$125 million into the future of active adult living in the Lake Country area.

We're ready to surpass new expectations by delivering thoughtfully refreshed, well, everything. This includes housing, dining, wellness activities, and more.

We've already begun with the recently-modernized Masonic Center for Health and Rehab, as well as the expansion of Riverside Lodge Assisted Living, which now features 52 new apartments and 17 dedicated memory care suites.

THE FIELDS AT THREE PILLARS

The Fields At Three Pillars is a one-of-a-kind active adult community adding another incredible offering to our top-rated campus in Dousman. Our unique community features three residence options:

- Courtyard Homes
- Garden Homes
- Lofts on the Green

These new offerings, coupled with a bevy of amenities accessible to our entire campus, include the following:

- ✓ Casual Dining
- ✓ Supper Club
- ✓ Pub
- ✓ Spa/Wellness
- ✓ Performing Arts Center
- ✓ Social Connection Spaces
- ✓ Walking/Biking Trails
- ✓ Pickleball Courts
- ✓ Rooftop Terrace
- ✓ Dog Park
- ✓ Fitness Center
- ✓ Theater
- ✓ Park
- ✓ Kayak Launch

**THE FOLLOWING PRICE RANGES ARE VALID
JULY 1, 2026, THROUGH JUNE 30, 2027:**

- **90% Refundable Residency Fee:** \$364,000 - \$985,000
- **Monthly Fee:** \$1,809 - \$4,773



LOFTS ON THE GREEN

Conveniently located in the heart of our new active adult community, Lofts On The Green offers seven amazing floor plans. Each choice includes spacious balconies, perfect for sipping morning coffee as the sun rises, and your favorite beverage when the sun sets.

You'll never have to stray far from home with every amenity — pub, dining, theater, spa, fitness, salon, and more — just steps away.

Lofts On The Green is the best of both worlds with a city-living feel in a gorgeous Lake Country setting.

All floorplans are approximate and subject to change. The following prices are valid July 1, 2026, through June 30, 2027.



4 - Visit ThreePillars.org





- 1 Bedroom
- 1 1/2 Baths
- Walk-in Closet
- Laundry Room
- Patio/Balcony
- 1,024 sf

SOHO

	90% Refundable Residency Fee	Monthly Fee
HIGH	\$519,000	\$1,821
LOW	\$364,000	\$2,759

LOFTS ON THE GREEN



- 1 Bedroom w/Den
- 1½ Baths
- Walk-in Closet
- Laundry Room
- Patio/Balcony
- 1,193 sf

DUBLIN

	90% Refundable Residency Fee	Monthly Fee
HIGH	\$595,000	\$1,920
LOW	\$418,000	\$2,998



- 2 Bedrooms
- 2 Baths
- Walk-in Closet
- Laundry Room
- Patio/Balcony
- 1,271 sf

SYDNEY

	90% Refundable Residency Fee	Monthly Fee
HIGH	\$628,000	\$1,932
LOW	\$439,000	\$3,068

LOFTS ON THE GREEN



- 2 Bedrooms
- 2 Baths
- Corner Residence
- Walk-in Closet
- Laundry Room
- Patio/Balcony
- 1,312 sf

COPENHAGEN

	90% Refundable Residency Fee	Monthly Fee
HIGH	\$647,000	\$1,998
LOW	\$453,000	\$3,169



- 2 Bedrooms
- 2 Baths
- Corner Residence
- Walk-in Closets
- Laundry Room
- Patio/Balcony
- 1,318 sf

VANCOUVER

	90% Refundable Residency Fee	Monthly Fee
HIGH	\$653,000	\$2,027
LOW	\$458,000	\$3,208



- 2 Bedrooms
- 2 Baths
- Corner Residence
- Walk-in Closet
- Laundry Room
- Patio/Balcony
- 1,324 sf

MANHATTAN

	90% Refundable Residency Fee	Monthly Fee
HIGH	\$653,000	\$2,027
LOW	\$458,000	\$3,208




- 2 Bedrooms w/Den
- 2 Baths
- Corner Residence
- Walk-in Closets
- Laundry Room
- Patio/Balcony
- 1,478 sf

LUXEMBOURG

	90% Refundable Residency Fee	Monthly Fee
HIGH	\$736,000	\$2,143
LOW	\$516,000	\$3,477

COURTYARD HOMES





You're ready to let go of some home-owner responsibilities and everything they came with. You're just not so keen on apartment living — just yet. The perfect transition? Three Pillars' new Courtyard Homes. With two options — 1,313-square-foot 2-bedroom or 1,058-square-foot one bedroom with den - you'll have plenty of space to make it yours.

You'll also be close enough to our amenities so you can get to the spa, theater, and dinner within minutes. All you have to do is open your door, walk through your beautifully-landscaped courtyard, and you're halfway there.

All floorplans are approximate and subject to change. The following prices are valid July 1, 2026, through June 30, 2027.



- 1 Bedroom w/Den
- 1½ Baths
- Walk-in Closet
- Laundry Room
- Front Porch
- 1½ Car Garage
- 1,058 sf

CHELSEA

	90% Refundable Residency Fee	Monthly Fee
HIGH	\$531,000	\$1,809
LOW	\$373,000	\$2,771



- 2 Bedrooms
- 2 Baths
- Walk-in Closet
- Laundry Room
- Front Porch
- Back Patio
- 1½ Car Garage
- 1,313 sf

MANCHESTER

	90% Refundable Residency Fee	Monthly Fee
HIGH	\$614,000	\$1,836
LOW	\$429,000	\$2,949

GARDEN HOMES



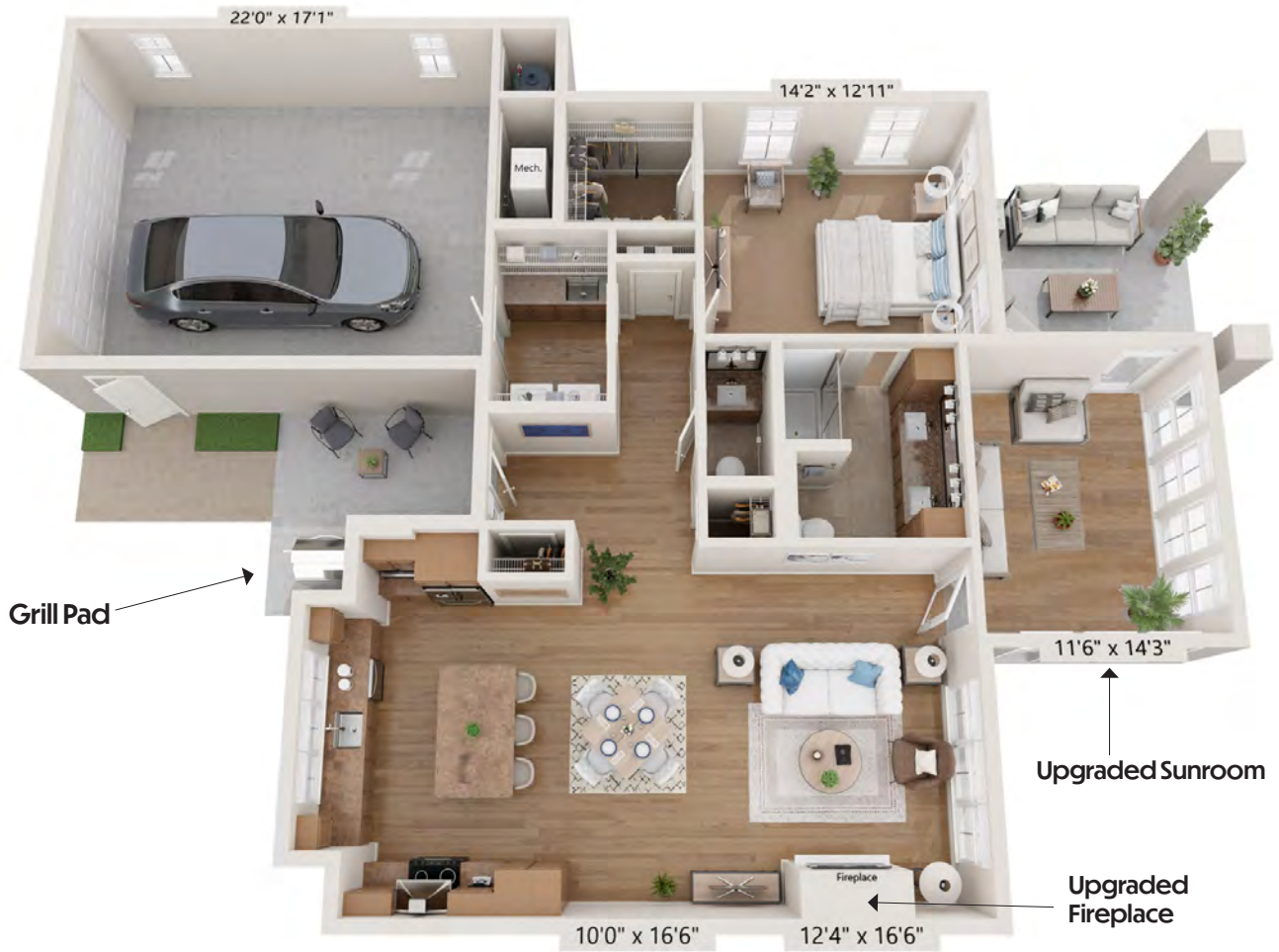
You used to love the mowing and didn't mind the snow removal if it meant you had your own space and your own home. Now, it's time to leave the shovels, rakes, ladders, and the mower behind and concentrate on "you time." But, you still want your space — your own porch, a nice outdoor area, and plenty of spots for gardening. Insert Three Pillars' Garden Homes, which make leaving your home seem like something you should've done years ago. Come home to a Three Pillars Garden Home and bring your free time. We'll take care of the rest.



All floorplans are approximate and subject to change. The following prices are valid July 1, 2026, through June 30, 2027.

The Fields
AT THREE PILLARS

GARDEN HOMES



- 1 Bedroom
- 1 1/2 Baths
- Walk-in Closet
- Laundry Room
- Front Porch
- Patio
- 1 1/2 Car Garage
- 1,263 sf (with upgraded sunroom)

VERSAILLES

	90% Refundable Residency Fee	Monthly Fee
HIGH	\$659,000	\$2,071
LOW	\$462,000	\$3,264

Prices do not include upgrades.



- 2 Bedrooms
- 2 Baths
- Walk-in Closet
- Laundry Room
- Front Porch
- Patio
- 2-Car Garage
- 1,549 sf (with upgraded sunroom)

SAVANNAH

90% Refundable
Residency Fee

Monthly
Fee

HIGH	\$819,000	\$2,249
LOW	\$573,000	\$3,733

Prices do not include upgrades.

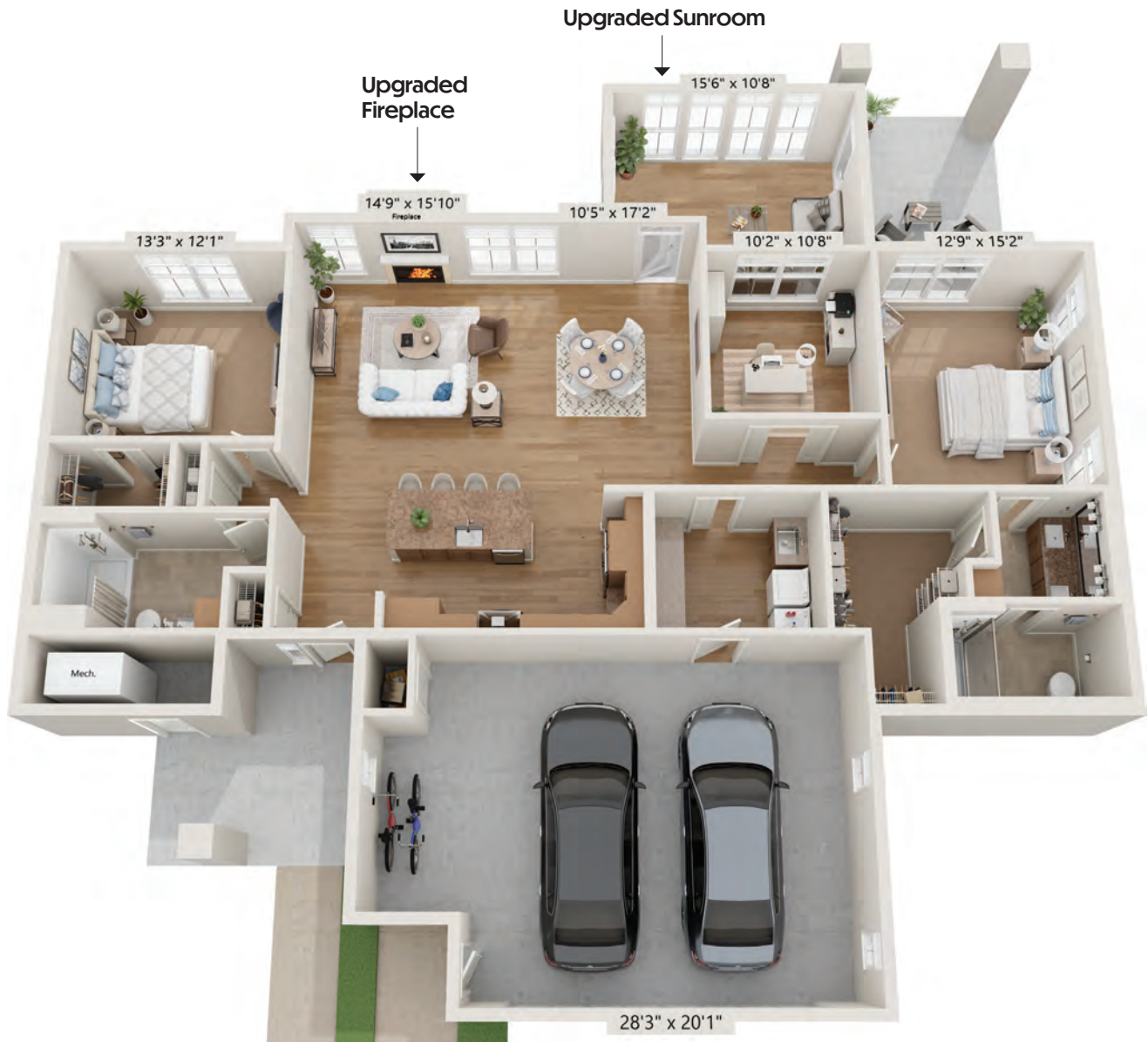


- 2 Bedrooms w/Den
- 2 Baths
- 2.5-Car Garage
- Walk-in Closet
- Laundry Room
- Patio
- 1,821 sf (with upgraded sunroom)

PASADENA

	90% Refundable Residency Fee	Monthly Fee
HIGH	\$947,000	\$2,738
LOW	\$663,000	\$4,355

Prices do not include upgrades.



HOLLAND

- 2 Bedrooms w/Den
- 2 Baths
- 2.5-Car Garage
- Walk-in Closet
- Laundry Room
- Patio
- 1,869 sf (with upgraded sunroom) *Prices do not include upgrades.*

90% Refundable
Residency Fee

Monthly
Fee

HIGH	\$985,000	\$2,864
LOW	\$688,000	\$4,773



WISCONSIN FREEMASONRY
228 MASON WAY

WELCOME CENTER
240 MASON WAY

ENVIRONMENTAL SERVICES CENTER
275 E SUNSET DR

PUMP HOUSE
HISTORICAL LANDMARK
301 E SUNSET DR

WELLNESS CONNECTION
404 N MAIN ST

HICKORY SUITES
SHORT TERM & OUTPATIENT REHAB
400 N MAIN ST

LAUNDRY/GROUNDS SHOP
293 E SUNSET DR

WOODS PAVILION

RIVERSIDE LODGE
MEMORY CARE, HR & LEARNING
410N MAIN ST

RIVERSIDE LODGE
ASSISTED LIVING
420 N MAIN ST

MASONIC HEALTH CARE CENTER
SKILLED NURSING LONG TERM CARE
400N MAIN ST

VILLAGE ON THE SQUARE
INDEPENDENT LIVING
314 E VILLAGE CT

HOLZ PAVILION
361 E SUNSET DR

COMPASS POINT
CATERED / ASSISTED LIVING
365 SUNSET DR

VILLAGE HOMES
INDEPENDENT LIVING



Three Pillars

SENIOR LIVING COMMUNITIES

CAMPUS MAP | DOUSMAN, WI 53118

SELF STORAGE
132 VAN BRUNT DR

FACILITIES SHOP
130 VAN BRUNT DR

THE FIELDS AT THREE PILLARS
ACTIVE ADULT LIVING

*All residences and amenities in The Fields at Three Pillars will be completed by early 2027.

**GARDEN HOMES AND
COURTYARD HOMES**

WEST LOFT
545 CARRIAGE BLVD

EAST LOFT
542 CARRIAGE BLVD

*Park

*Bark Park

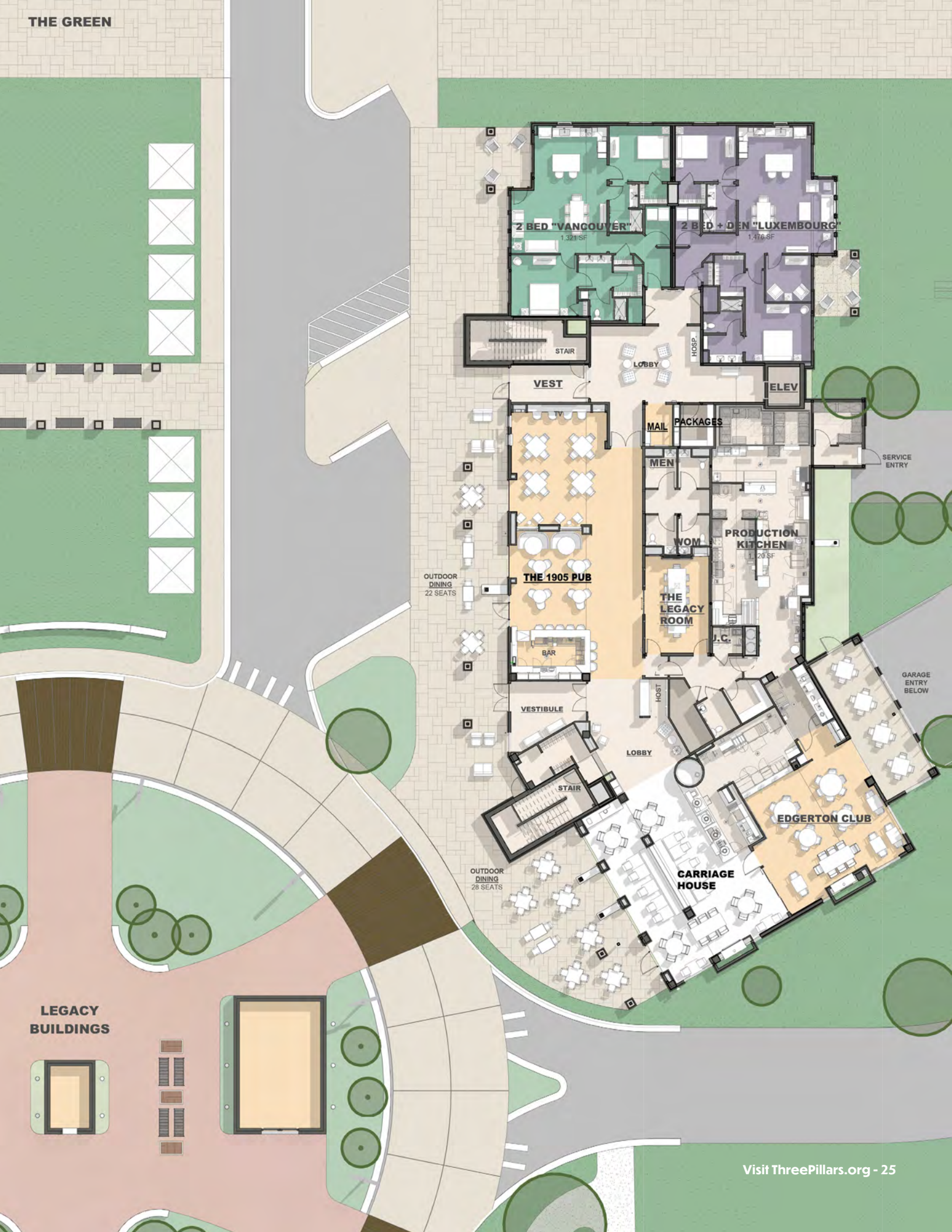
*Pickleball

*Kayak Launch

BARK RIVER

LOFTS ON THE GREEN AMENITIES





LEGACY BUILDINGS

How Your Residency Fee Works

90% OF YOUR RESIDENCY FEE IS ALWAYS THERE FOR YOU!

Whatever your future needs, 90% of your residency fee is there for you. When you leave Active Adult Living or Independent Living at Three Pillars, you receive 90% of your residency fee. If you need a higher level of care and move to Compass Point or Riverside Lodge, you have your funds.

You not only have the peace of mind your money is always there, you have the incredible comfort of knowing you're in one of the top-rated continuing care communities in the country!

And, if you should ever choose to leave Three Pillars, your 90% residency fee comes back to you in full! Speak with our sales team for complete details.



All floorplans are approximate and subject to change.
Prices listed are valid July 1, 2026, through June 30, 2027.

What's Included?

- ✓ All appliances
- ✓ Priority access to other levels of care
- ✓ Social and recreational activities
- ✓ Wellness/Fitness membership
- ✓ Local scheduled transportation
- ✓ Interior and exterior maintenance and repairs
- ✓ Groundskeeping/snow removal
- ✓ Property taxes
- ✓ Water and sewer
- ✓ 24-hour emergency/security system
- ✓ Secured WiFi
- ✓ Trash and recycling removal
- ✓ Basic cable TV

A La Carte Services

- ✓ Dining in various venues
- ✓ Housekeeping
- ✓ Personal transportation
- ✓ Personal maintenance

Potential Added Fees

4th-floor Loft premium:

- Additional \$10,000 residency fee
- Additional \$35 monthly fee

Lofts underground parking

- \$64 per month

10'x10' storage unit

- \$90 per month

Outdoor RV / boat / motor vehicle storage

- \$25 per month

Outdoor RV / boat / motor vehicle storage with electricity

- \$30 per month

Refundable pet deposit

- \$1,500 one-time fee

CONTACT OUR SALES DEPARTMENT TODAY!

262.965.7022



WISCONSIN'S ONLY

Community Rated Best in All Possible
Senior Living Categories!



Visit us online at ThreePillars.org

240 Mason Way, Dousman, WI 53118

