



# *The Fields*

AT THREE PILLARS



# Since 1905, Three Pillars Senior Living Communities has served thousands upon thousands of families and residents.

Our dedication to a storied history of mission-based services exists as strongly today as it did back then. For us, it’s always mission first – we measure our success by the satisfaction of our residents, not the size of our bottom line. Three Pillars’ proceeds are reinvested into the organization – not distributed to shareholders.

We value our team members as individuals – recognizing the integral role they play in providing residents with a lifestyle they deserve, at an exceptional value, from people they can trust.

As we look to the future, we consistently seek ways to provide our current and future residents with industry-leading, high-quality care, programming, and accommodations.

## OUR MISSION

Three Pillars Senior Living Communities, sponsored by the Masonic Fraternity, takes pride in meeting the social, physical, and spiritual needs of older adults through high-quality housing and services.

## OUR VISION

We will be the senior living community of choice in Wisconsin, grounded in Masonic principles in all we do, for residents and other customers who will live lives of fully achieved personal satisfaction, and whose support is uniquely crafted to maintain the highest level of vibrant health and independence.

## OUR VALUES

We’re proud of our culture. It’s driven by our values and modeled by our staff.

The respect and commitment we demonstrate to our residents, and each other, leads to a fulfilled life with a mindset of fun as a habit, and empathy as a decision.

Our five organizational values are:

- Respect
- Commitment
- Fulfillment
- Empathy
- Fun

# LIFE IS JUST GETTING STARTED AT THREE PILLARS

What the next generation demands from retirement living and services is different. The overall experiences and expectations are distinct. We know this and we celebrate it!

What won’t change is a demand for high-quality services, delivered by trusted, compassionate staff and volunteers, which is why we plan to invest over \$125 million into the future of active adult living in the Lake Country area.

We’re ready to surpass new expectations by delivering thoughtfully refreshed, well, everything. This includes housing, dining, wellness activities, and more.

We’ve already begun with the recently-modernized Masonic Center for Health and Rehab, as well as the expansion of Riverside Lodge Assisted Living, which now features 52 new apartments, and 17 dedicated memory care suites.

## THE FIELDS AT THREE PILLARS

The Fields At Three Pillars is a one-of-a-kind active adult community adding another incredible offering to our top-ranked campus in Dousman. Our unique community features:

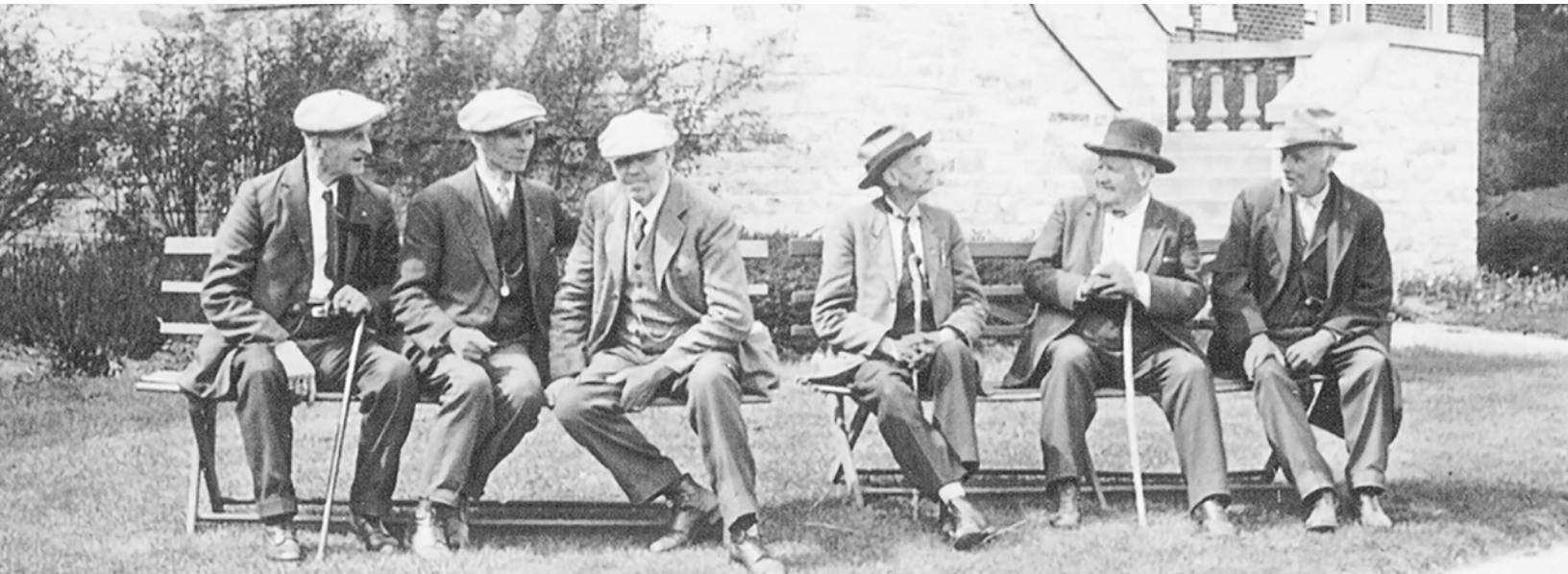
- Courtyard Homes
- Garden Homes
- Lofts

These new options, coupled with the addition of a “Town Center” accessible by our entire campus, will include amenities such as:

- |                            |                     |
|----------------------------|---------------------|
| ✓ Casual Dining            | ✓ Pickleball Courts |
| ✓ Supper Club              | ✓ Rooftop Terrace   |
| ✓ Pub                      | ✓ Dog Park          |
| ✓ Spa/Wellness             | ✓ Fitness Center    |
| ✓ Performing Arts Center   | ✓ Theater           |
| ✓ Social Connection Spaces | ✓ Park              |
| ✓ Walking/Biking Trails    | ✓ Kayak Launch      |

THE FOLLOWING PRICE RANGES ARE VALID  
JULY 1, 2025, THROUGH JUNE 30, 2026:

- 90% Refundable Residency Fee: \$347,000-\$938,000
- Monthly Fee: \$1,723-\$4,546





LOFTS ON THE GREEN

Conveniently located in the heart of our new “Town Center,” Lofts On The Green offers seven amazing floor plans. Each choice includes spacious balconies, perfect for sipping morning coffee as the sun rises, and your favorite beverage when the sun sets.

You’ll never have to stray far from home with every amenity - pub, dining, theater, spa, fitness, salon and more - just steps away.

Lofts On The Green is the best of both worlds with a city-living feel in a gorgeous Lake Country setting.

All floorplans are approximate and subject to change. The following prices are valid July 1, 2025, through June 30, 2026.



- 1 Bedroom
- 1½ Baths
- Walk-in Closet
- Laundry Room
- Patio/Balcony
- 1,024 sf

SOHO

	90% Refundable Residency Fee	Monthly Fee
HIGH	\$494,000	\$1,734
LOW	\$347,000	\$2,628







- 1 Bedroom w/Den
- 1½ Baths
- Walk-in Closet
- Laundry Room
- Patio/Balcony
- 1,193 sf

DUBLIN

	90% Refundable Residency Fee	Monthly Fee
HIGH	\$567,000	\$1,829
LOW	\$398,000	\$2,855



- 2 Bedrooms
- 2 Baths
- Walk-in Closet
- Laundry Room
- Patio/Balcony
- 1,271 sf

SYDNEY

	90% Refundable Residency Fee	Monthly Fee
HIGH	\$598,000	\$1,840
LOW	\$418,000	\$2,922





- 2 Bedrooms
- 2 Baths
- Corner Residence
- Walk-in Closet
- Laundry Room
- Patio/Balcony
- 1,312 sf

COPENHAGEN

	90% Refundable Residency Fee	Monthly Fee
HIGH	\$616,000	\$1,903
LOW	\$431,000	\$3,018



- 2 Bedrooms
- 2 Baths
- Corner Residence
- Walk-in Closets
- Laundry Room
- Patio/Balcony
- 1,318 sf

VANCOUVER

	90% Refundable Residency Fee	Monthly Fee
HIGH	\$622,000	\$1,930
LOW	\$436,000	\$3,055





- 2 Bedrooms
- 2 Baths
- Corner Residence
- Walk-in Closet
- Laundry Room
- Patio/Balcony
- 1,324 sf

MANHATTAN

	90% Refundable Residency Fee	Monthly Fee
HIGH	\$622,000	\$1,930
LOW	\$436,000	\$3,055



- 2 Bedrooms w/Den
- 2 Baths
- Corner Residence
- Walk-in Closets
- Laundry Room
- Patio/Balcony
- 1,478 sf

LUXEMBOURG

	90% Refundable Residency Fee	Monthly Fee
HIGH	\$701,000	\$2,041
LOW	\$491,000	\$3,311





You're ready to let go of several aspects of home-ownership responsibilities and everything they come with. You're just not so keen on apartment living – not yet. The perfect transition? Three Pillars' new Courtyard Homes. With two options – 1,313 2-bedroom or 1,058 one bedroom with den – you'll have plenty of space to make it yours.

You'll also be close enough to our Town Center so you can get to the spa, theater, and dinner within minutes. All you have to do is open your door, walk through your beautifully-landscaped courtyard and you're halfway there.

All floorplans are approximate and subject to change. The following prices are valid July 1, 2025, through June 30, 2026.





- 1 Bedroom w/Den
- 1½ Baths
- Walk-in Closet
- Laundry Room
- Front Porch
- 1½ Car Garage
- 1,058 sf

## CHELSEA

	90% Refundable Residency Fee	Monthly Fee
HIGH	\$506,000	\$1,723
LOW	\$355,000	\$2,639



- 2 Bedrooms
- 2 Baths
- Walk-in Closet
- Laundry Room
- Front Porch
- Back Patio
- 1½ Car Garage
- 1,313 sf

## MANCHESTER

	90% Refundable Residency Fee	Monthly Fee
HIGH	\$585,000	\$1,749
LOW	\$409,000	\$2,809



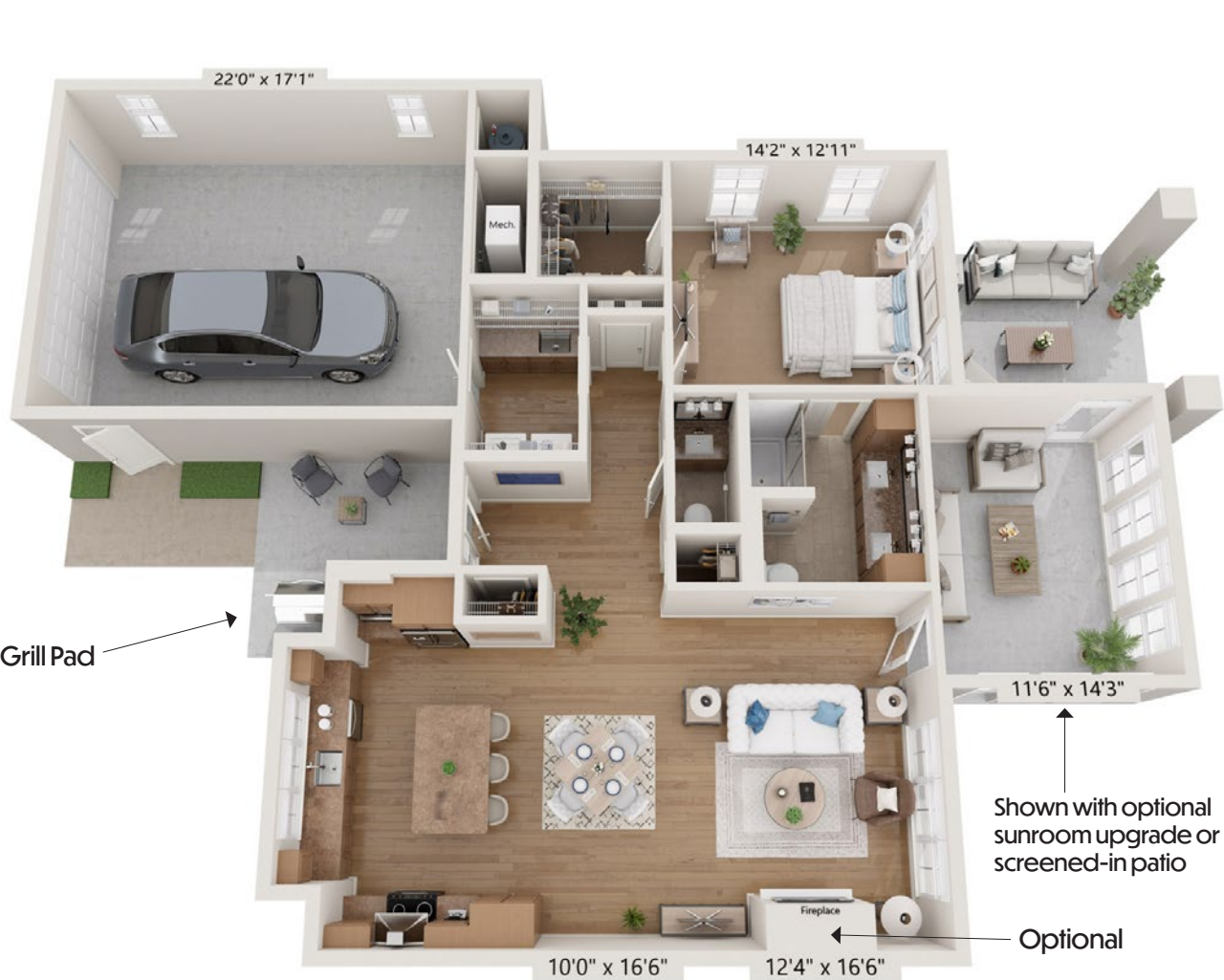


You used to love the mowing, and didn't mind the snow removal if it meant you had your space, your home. Now, it's time to leave the shovels, rakes, ladders and the mower behind, and concentrate on "you time." But, you still want your space - your own porch, a nice outdoor area, and plenty of spots for gardening. Insert Three Pillars' Garden Homes, which make leaving your home seem like something you should've done years ago. Come home to a Three Pillars Garden Home and bring your free time. We'll take care of the rest.

All floorplans are approximate and subject to change. The following prices are valid July 1, 2025, through June 30, 2026.

*The Fields*  
AT THREE PILLARS





- 1 Bedroom
- 1½ Baths
- Walk-in Closet
- Laundry Room
- Front Porch
- Patio
- 1½ Car Garage
- 1,092 sf (1,263 with optional sunroom)

VERSAILLES

	90% Refundable Residency Fee	Monthly Fee
HIGH	\$628,000	\$1,972
LOW	\$440,000	\$3,109



- 2 Bedrooms
- 2 Baths
- Walk-in Closet
- Laundry Room
- Front Porch
- Patio
- 2-Car Garage
- 1,375 sf (1,549 with optional sunroom)

SAVANNAH

	90% Refundable Residency Fee	Monthly Fee
HIGH	\$780,000	\$2,142
LOW	\$546,000	\$3,555





- 2 Bedrooms w/Den
- 2 Baths
- 2.5-Car Garage
- Walk-in Closet
- Laundry Room
- Patio
- 1,644 sf (1,821 with optional sunroom)

PASADENA

	90% Refundable Residency Fee	Monthly Fee
HIGH	\$902,000	\$2,608
LOW	\$631,000	\$4,148



- 2 Bedrooms w/Den
- 2 Baths
- 2.5-Car Garage
- Walk-in Closet
- Laundry Room
- Patio
- 1,708 sf (1,869 with optional sunroom)

HOLLAND

	90% Refundable Residency Fee	Monthly Fee
HIGH	\$938,000	\$2,728
LOW	\$655,000	\$4,546





# Three Pillars

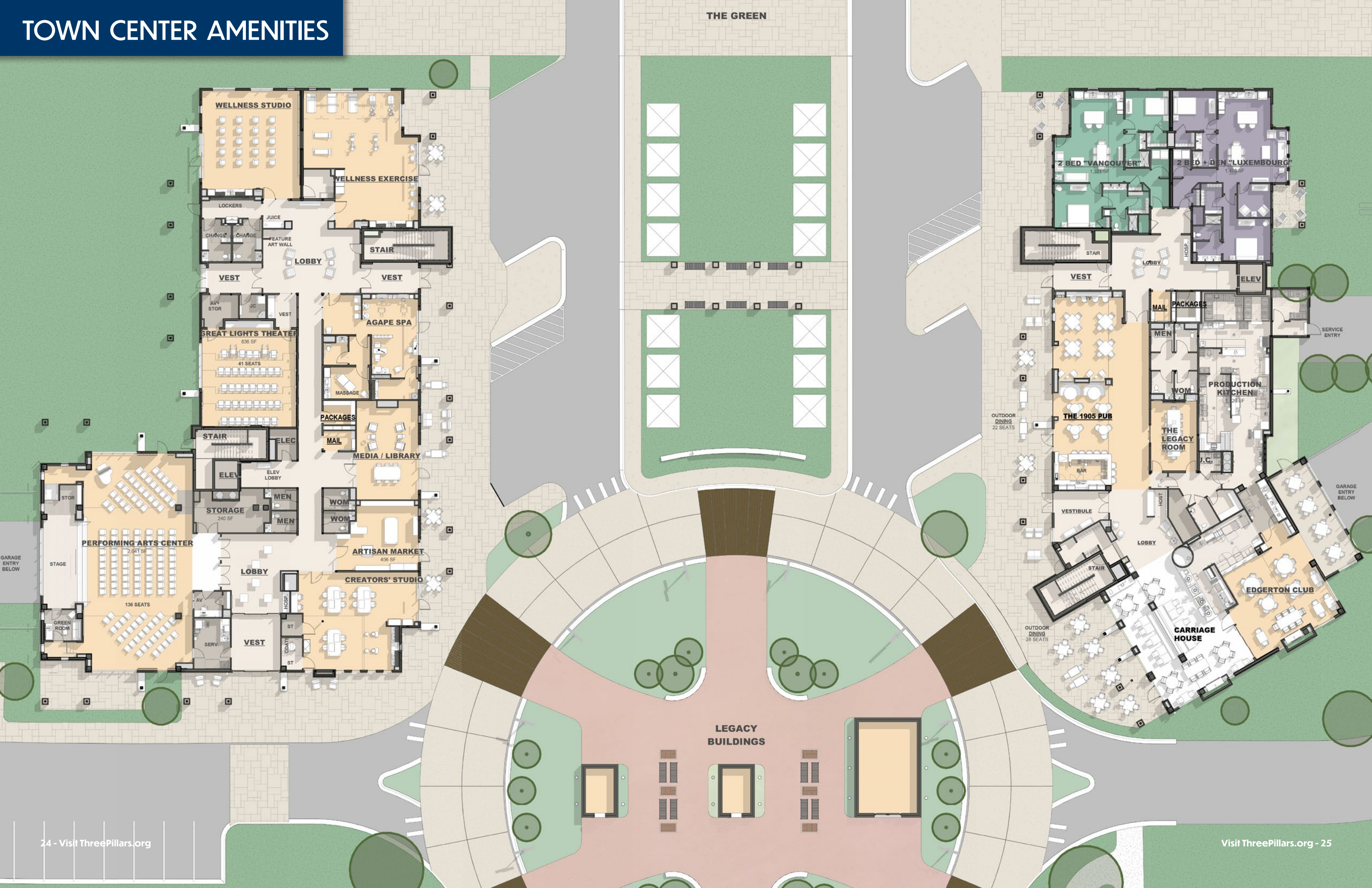
SENIOR LIVING COMMUNITIES

CAMPUS MAP | DOUSMAN, WI 53118





TOWN CENTER AMENITIES





## How It Works

1. Join the Priority Program for a fully-refundable \$1,000.
2. We'll call you when it's your Priority Member number.
3. Pick your desired home from our remaining residences.
4. Choose between two fee structure options - higher residency fee with lower month fee, or lower residency fee with higher monthly fee.
  - Higher residency fee and lower monthly fee provides higher income protection and more value-driven monthly service fees
  - Lower residency fee and higher monthly fee is designed for those who enjoy a comfortable and predictable income.
5. Reserve your new home by paying 5% of your chosen residency fee.
6. Pay the residency fee balance when your new home is move-in ready.
7. Move in and start your Three Pillars adventure!

## 90% OF YOUR RESIDENCY FEE IS ALWAYS THERE FOR YOU!

Whatever your future needs, 90% of your residency fee is there for you. When you leave independent living at Three Pillars, you receive 90% of your residency fee. If you need a higher level of care and move to Compass Point or Riverside Lodge, you now have that money.

You not only have the peace of mind your money is always there, you have the incredible comfort of knowing you're in one of only 57 top-rated continuing care communities in the country!

And, if you should ever choose to leave Three Pillars, your 90% residency fee comes back to you in full!



## What's Included?

- ✓ All appliances
- ✓ Priority access to other levels of care
- ✓ Social, cultural, and recreational activities
- ✓ Wellness Connection membership
- ✓ Local scheduled transportation
- ✓ Interior and exterior maintenance and repairs
- ✓ Groundskeeping/snow removal
- ✓ Property taxes
- ✓ Water and sewer
- ✓ 24-hour emergency/security system
- ✓ Secured WiFi
- ✓ Trash and recycling removal
- ✓ Basic Cable TV

## A La Carte Services

- ✓ Dining in various venues
- ✓ Housekeeping
- ✓ Personal transportation

All floorplans are approximate and subject to change. Prices listed are valid July 1, 2025, through June 30, 2026.



# CONTACT US TODAY!

**LISA PORZKY**

SALES DIRECTOR

262.965.3404

[lporzky@ThreePillars.org](mailto:lporzky@ThreePillars.org)

**BRANDON PREDZIK**

SALES COUNSELOR

262.965.3504

[bpredzik@ThreePillars.org](mailto:bpredzik@ThreePillars.org)



## ONE OF ONLY 57

Best Continuing Care Retirement  
Communities in America for 2025



Visit us online at [ThreePillars.org](http://ThreePillars.org) or call 800.848.5306

410 N Main St, Dousman, WI 53118

